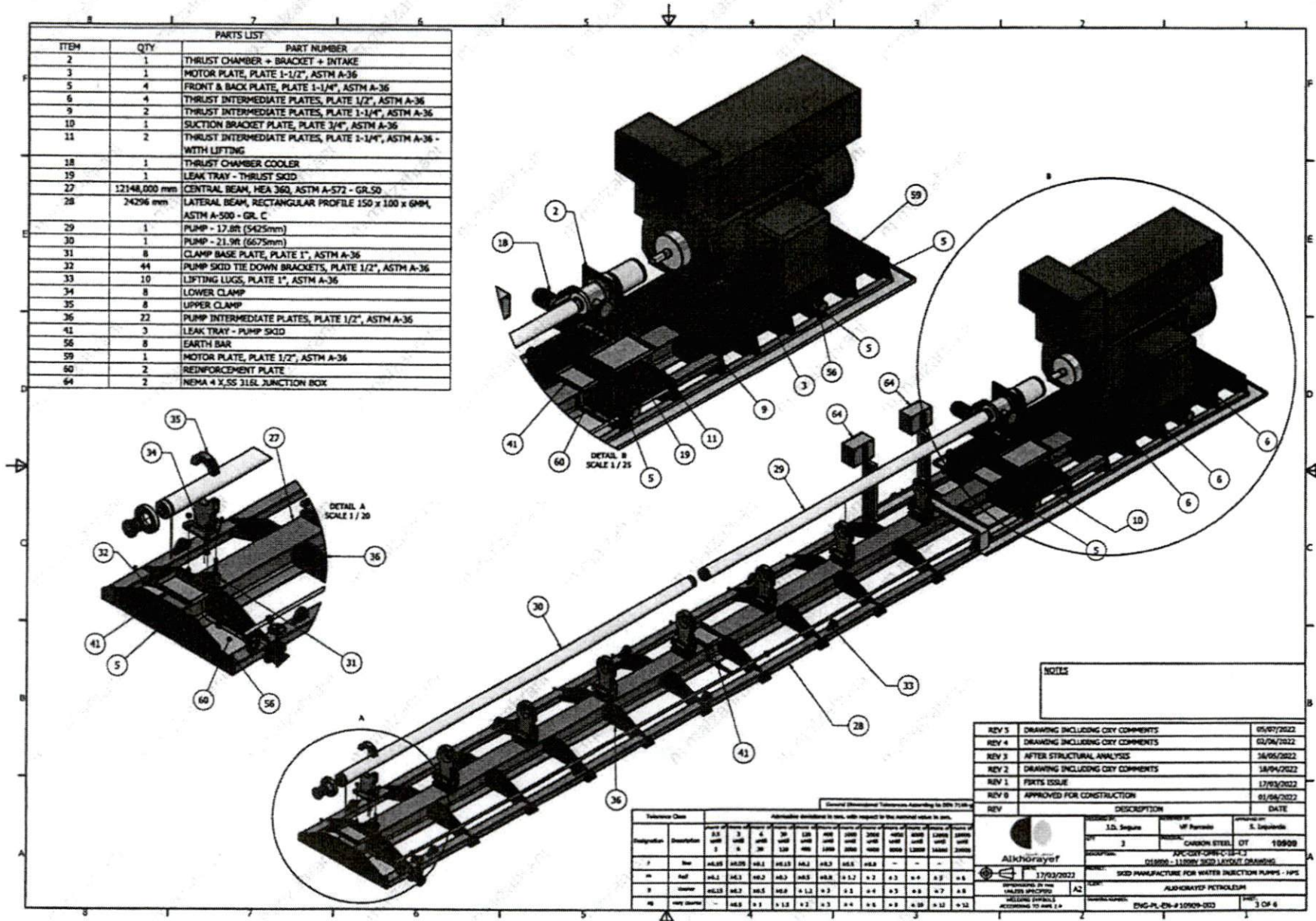






PARTS LIST		
ITEM	QTY	PART NUMBER
2	1	THRUST CHAMBER + BRACKET + INTAKE
3	1	MOTOR PLATE, PLATE 1-1/2", ASTM A-36
5	4	FRONT & BACK PLATE, PLATE 1-1/4", ASTM A-36
6	4	THRUST INTERMEDIATE PLATES, PLATE 1/2", ASTM A-36
9	2	THRUST INTERMEDIATE PLATES, PLATE 1-1/4", ASTM A-36
10	1	SUCTION BRACKET PLATE, PLATE 3/4", ASTM A-36
11	2	THRUST INTERMEDIATE PLATES, PLATE 1-1/4", ASTM A-36 - WITH LIFTING
18	1	THRUST CHAMBER COOLER
19	1	LEAK TRAY - THRUST SKID
27	12148,000 mm	CENTRAL BEAM, HEA 360, ASTM A-572 - GR.50
28	24296 mm	LATERAL BEAM, RECTANGULAR PROFILE 150 x 100 x 6MM, ASTM A-500 - GR. C
29	1	PUMP - 17.8ft (5425mm)
30	1	PUMP - 21.9ft (6675mm)
31	8	CLAMP BASE PLATE, PLATE 1", ASTM A-36
32	44	PUMP SKID TIE DOWN BRACKETS, PLATE 1/2", ASTM A-36
33	10	LIFTING LUGS, PLATE 1", ASTM A-36
34	8	LOWER CLAMP
35	8	UPPER CLAMP
36	22	PUMP INTERMEDIATE PLATES, PLATE 1/2", ASTM A-36
41	3	LEAK TRAY - PUMP SKID
56	8	EARTH BAR
59	1	MOTOR PLATE, PLATE 1/2", ASTM A-36
60	2	REINFORCEMENT PLATE
64	2	NEMA 4 X,SS 316L JUNCTION BOX



NOTES

REV	DESCRIPTION	DATE
REV 5	DRAWING INCLUDING CRY COMMENTS	05/07/2022
REV 4	DRAWING INCLUDING CRY COMMENTS	02/06/2022
REV 3	AFTER STRUCTURAL ANALYSIS	16/05/2022
REV 2	DRAWING INCLUDING CRY COMMENTS	18/04/2022
REV 1	PARTS ISSUE	17/03/2022
REV 0	APPROVED FOR CONSTRUCTION	01/08/2022

Designation	Description	Allowance (dimensional tolerances according to EN 10148-2)														
		0.5	1	1.5	2	3	4	5	6	8	10	12	15			
F	mm	±0.05	±0.08	±0.1	±0.15	±0.2	±0.3	±0.4	±0.5	±0.6	±0.8	-	-	-	-	-
H	mm	+0.1	+0.15	+0.2	+0.3	+0.4	+0.5	+0.6	+0.8	+1.2	+1.7	+2.3	+3	+4	+5	+6
H	mm	+0.15	+0.2	+0.3	+0.4	+0.5	+0.6	+0.8	+1.2	+1.7	+2.3	+3	+4	+5	+6	+8
H	mm	-	-0.05	-0.1	-0.15	-0.2	-0.3	-0.4	-0.5	-0.6	-0.8	-1.2	-1.7	-2.3	-3	-4

APPROVED BY: **Alkhodayer**  
 DATE: 17/03/2022  
 DRAWING NO: 010000 - 110000 - 0001 - 0001 - 0001  
 PROJECT: SKID MANUFACTURE FOR WATER INJECTION PUMPS - FPS  
 CLIENT: ALKHODAYER PETROLEUM  
 DRAWING NO: ENG-PL-EN-#10909-002  
 3 OF 6



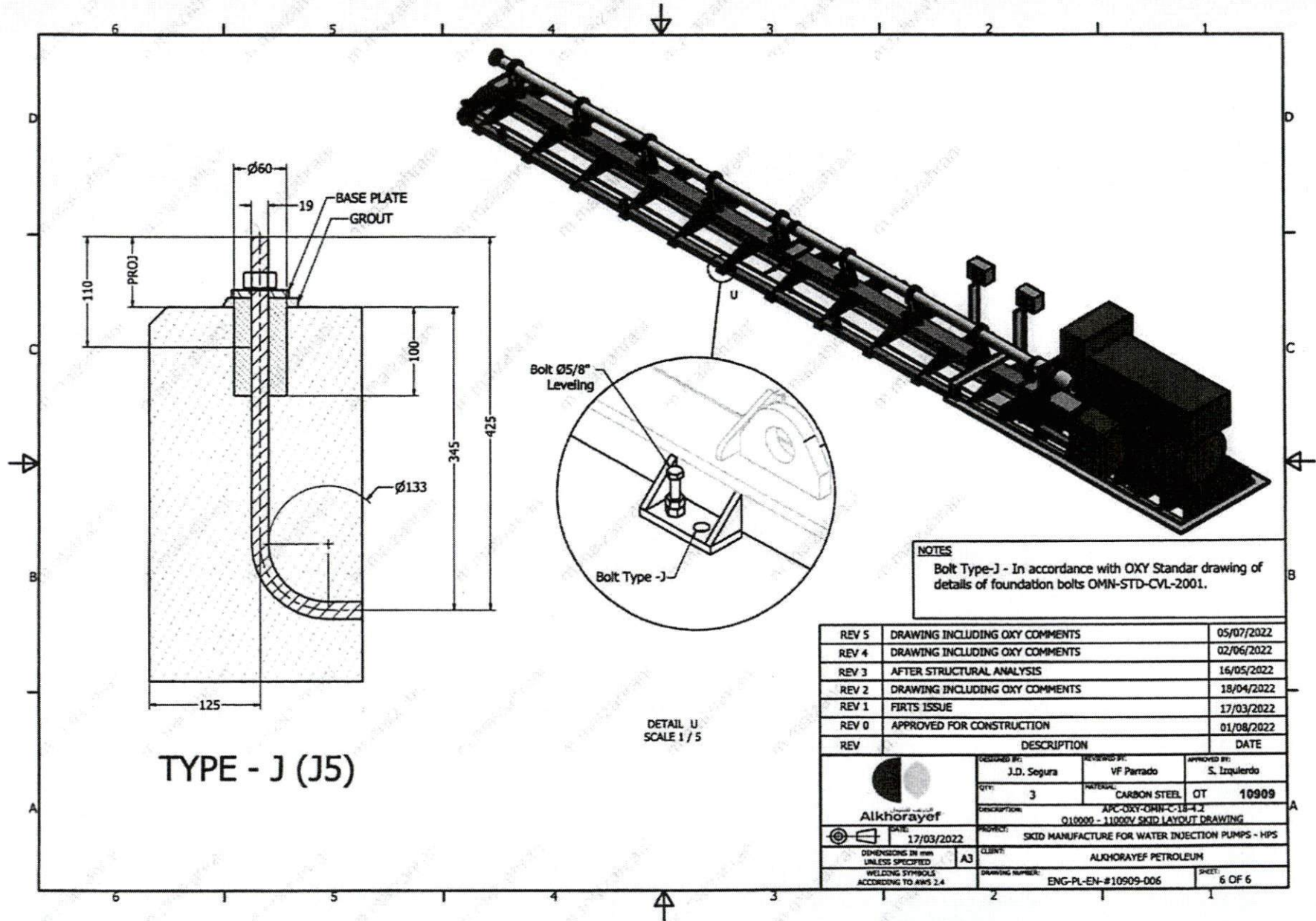
ITEM	PART NUMBER	COMPONENT	DESCRIPTION	QTY
1	11299-5001-1001020786	HPS	HPS SKID, 700HP/11000V SAFE AREA, WJ12000 PUMP 79 STG, XHD THRUST CHAMBER, API682 CARTRIDGE SEAL, BALANCED COUPLING AND INSTRUMENTATION WIRED TO LJB	1
2	11299-5001-1001020908	HPS SKID	HORIZONTAL PUMP SKID, WJ12000 PUMP, 700HP MOTOR, HEAVY DUTY	1
3	11299-5001-1001020780	MOTOR	MOTOR 700HP, 3000RPM, 11000V, 50HZ, ICA11, IEC 60034 SAFE AREA	1
4	11101-5001-00002400078	SHIMS	SHIMS, ACCUSHIMS, KIT D 5" X 5"	1
5	11899-5001-1001020530	COUPLING	COUPLING TC x MOTOR, 700 HP, DISC COUPLING, FLEXIBLE, SPACER, NON-LUBRICATED, SF 1.5 BALANCED	1
6	11899-5001-1001020793	COUPLING GUARD	COUPLING GUARD ASSEMBLY 700HP MOTOR	1
7	11799-5001-1001020533	HORIZONTAL THRUST CHAMBER	XHD, LPS TC ASSEMBLY 14,000 LBS THRUST, 1200 HP, CORROSION RESISTANT HEAD	1
8	11899-5001-1001020795	LUBE OIL COOLER	COOLER PUMP MOTOR 1/2HP/415V,50HZ COOLER FAN MOTOR 1/3HP/415V,50HZ	1
9	11299-5001-1001020790	BRACKET	XHD, BRACKET SYSTEM 700HP MOTOR	1
10	11899-5001-1001020536	MECHANICAL SEAL	MECHANICAL SEAL API682 WETTED PARTS IN DUPLEX STAINLESS STEEL, 1.5 INCHES SHAFT, CARTRIDGE TYPE	1
11	11899-5001-1001020794	FLUSH PLAN	FLUSH PLAN FOR API682 SEAL	1
12	11899-5001-1001020548	SEAL PLATE FOR SEAL	SEAL PLATE/CHAMBER FOR XHD- LPS TC FOR CARTRIDGE SEAL	1
13	11899-5001-1001020542	INTAKE FLANGE	INTAKE FLANGE 675, 4" 1500 RF, DUPLEX STAINLESS STEEL WITH TEST AND MATERIAL CERT	1
14	11899-5001-1001020550	COUPLING TC-PUMP	COUPLING TC-675S PUMP	1
15	11201-5002-1001020488	PUMP	SPECTRUM PUMP, WJ12000, DUPLEX, #150HSG, 44STG, CMP AR, HS, HSG DUPLEX, HB DUPLEX LT	1
16	11201-5002-1001020489	PUMP	SPECTRUM PUMP, WJ12000, DUPLEX, #120HSG, 35STG, CMP AR, HS, HSG DUPLEX, HB DUPLEX UT	1
17	11899-5001-1001020543	DISCHARGE FLANGE	DISCHARGE FLANGE 675, 3"-1500 RF, DUPLEX STAINLESS STEEL WITH TEST AND MATERIAL CERT	1
18	11899-5001-1001020799	PRESSURE TRANSMITTER	[YOKOGAWA EJA530E] PRESSURE TRANSMITTER, 0-200PSI, 4-20mA, HART PROTOCOL, ATEX CERTIFIED, SUITABLE FOR ZONE1, IIA/IB T4, HAZARDOUS AREA	1
19	11899-5001-1001020801	TEMPERATURE TRANSMITTER	[YOKOGAWA YTA610] TEMPERATURE TRANSMITTER WITH RTD 4-20mA, ATEX certified suitable for zone 1, IIA/IB T4 for Hazardous area	1
20	11899-5001-1001020797	VIBRATION TRANSMITTER	[BENTLEY NEVADA 177230 ST]ACCELEROMETER WITH TRANSMITTER 4-20mA, ATEX certified suitable for zone 1, IIA/IB T4 for Hazardous area	7
21	11299-450100000040543	JUNCTION BOX	NEMA 4 X,SS 316L JUNCTION BOX	2

NOTES

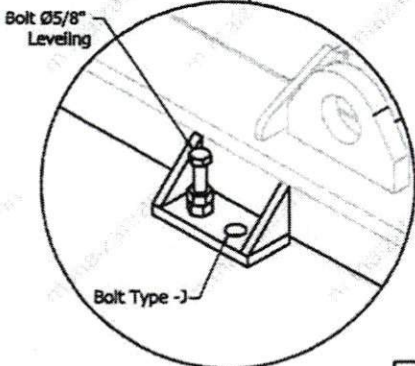
REV	DESCRIPTION	DATE
REV 5	DRAWING INCLUDING OXY COMMENTS	05/07/2022
REV 4	DRAWING INCLUDING OXY COMMENTS	02/06/2022
REV 3	AFTER STRUCTURAL ANALYSIS	16/05/2022
REV 2	DRAWING INCLUDING OXY COMMENTS	18/04/2022
REV 1	FIRTS ISSUE	17/03/2022
REV 0	APPROVED FOR CONSTRUCTION	01/08/2022

ITEM	REFERENCE DOCUMENT NUMBER	DESCRIPTION
1	APC-OXY-OMN-C-07-3.2	WJ-12000 datasheet 11000 V safe area
2	APC-OXY-OMN-C-07-2.2	700 HP@11000 V data sheet
3	APC-OXY-OMN-C-18-6.3	Spacer coupling Motor - Thrust Chamber 700HP 11000V
4	APC-OXY-OMN-D-02-8	Mechanical seal drawing
5	APC-OXY-OMN-C-18-2.3	Motor 700 HP@11000 V drawing
6	APC-OXY-OMN-C-18-5.3	14000 lbs Thrust chamber layout drawing 11000 V
7	APC-OXY-OMN-C-18-3.1	Pump Drawing WJ12000 LT, 44 stg for 10,000 BFPD
8	APC-OXY-OMN-C-18-3.2	Pump Drawing WJ12000 UT, 35 stg for 10,000 BFPD
9	APC-OXY-OMN-C-01-2	10000 BFPD@6600 V PAID
10	APC-OXY-OMN-C-14-2	Power supply datasheet 700HP-11000 V SAFE AREA
11	ACP-OXY-OMN-H-01-1	Skid manufacturing inspection and test plan
12	ACP-OXY-OMN-H-01-2	Pumps inspection and test plan
13	ACP-OXY-OMN-H-01-3.2	700 HP@11000 V inspection and test plan

REV	DESCRIPTION	DATE			
DESIGNED BY:	J.D. Segura	REVIEWED BY:	VF Parrado	APPROVED BY:	S. Izquierdo
DATE:		MATERIAL:	CARBON STEEL	OT:	10909
QTY:	3	DESCRIPTION:	APC-OXY-OMN-C-18-4.2		
010000 - 11000V SKID LAYOUT DRAWING					
PROJECT: SKID MANUFACTURE FOR WATER INJECTION PUMPS - HPS					
CLIENT: ALKHORAYEF PETROLEUM					
DRAWING NUMBER: ENG-PL-EN-#10909 - 005					
SHEET: 5 OF 6					



TYPE - J (J5)



DETAIL U  
SCALE 1 / 5

**NOTES**  
Bolt Type-J - In accordance with OXY Standar drawing of details of foundation bolts OMN-STD-CVL-2001.

REV	DESCRIPTION	DATE
REV 5	DRAWING INCLUDING OXY COMMENTS	05/07/2022
REV 4	DRAWING INCLUDING OXY COMMENTS	02/06/2022
REV 3	AFTER STRUCTURAL ANALYSIS	16/05/2022
REV 2	DRAWING INCLUDING OXY COMMENTS	18/04/2022
REV 1	FIRTS ISSUE	17/03/2022
REV 0	APPROVED FOR CONSTRUCTION	01/08/2022

<p>Alkhorayef</p> <p>17/03/2022</p> <p>DATE</p>	DESIGNED BY: J.D. Segura	REVIEWED BY: VF Parrado	APPROVED BY: S. Izquierdo
	QTY: 3	MATERIAL: CARBON STEEL	OT 10909
	DESCRIPTION: APC-OXY-ORIN-C-18-4-2		
	PROJECT: 010000 - 110000V SKID LAYOUT DRAWING		
DIMENSIONS IN mm UNLESS SPECIFIED		CLIENT: ALKHORAYEF PETROLEUM	
WELDING SYMBOLS ACCORDING TO AWS 2.4		DRAWING NUMBER: ENG-PL-EN-#10909-006	SHEET: 6 OF 6